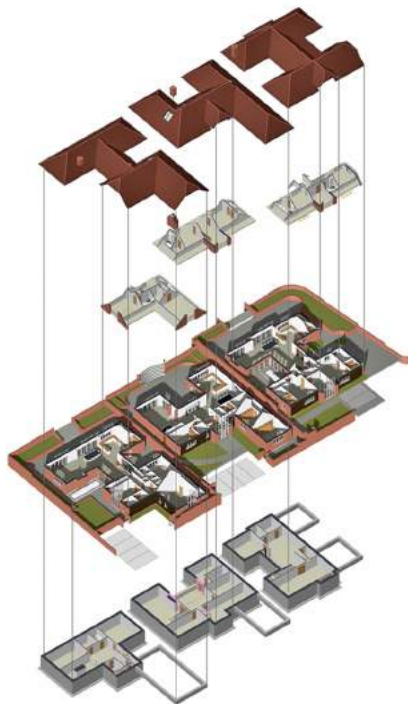


Luxury New Developer Housing in Greenbelt

for
Private Developer



Rosebury Farm is a high-end residential development consisting of 3 exclusive 5-bedroom houses set within the local greenbelt. The scheme was subject to many challenges to satisfy the tight planning restrictions imposed on the development. The result is a redeveloped scheme that maximises the site's potential yet enhances the local countryside.

The site, currently vacant, is occupied by commercial buildings, a dwelling and areas of concrete hardstanding the remainder is paddock.

The three proposed buildings developed in 3D using Building Information Modelling (BIM) share a common architectural language and palette of materials, which reflect the semi rural setting and pick up on the approach agreed for the approved scheme.

The use of asymmetrical composition incorporating hipped gables and fully hipped roof forms reduces the volume of the buildings on the site and produces a relaxed aspect which is typical of buildings in a rural rather than town setting.

Basements have been added to all three dwellings and first floors added to the two outer dwellings. Care has been taken to avoid overlooking and locate roof lights within private rather than publicly facing elevations.

Key features

- High-end exclusive residential development in local greenbelt for local developer
- Developed in 3D using Building Information Modelling (BIM)



Inkpen Downie Architecture & Design Ltd

2 Balkerne House • Balkerne Passage • Colchester • Essex • CO1 1PA • T: 01206 577244
• E: arch@inkpendownie.co.uk • W: www.inkpendownie.co.uk